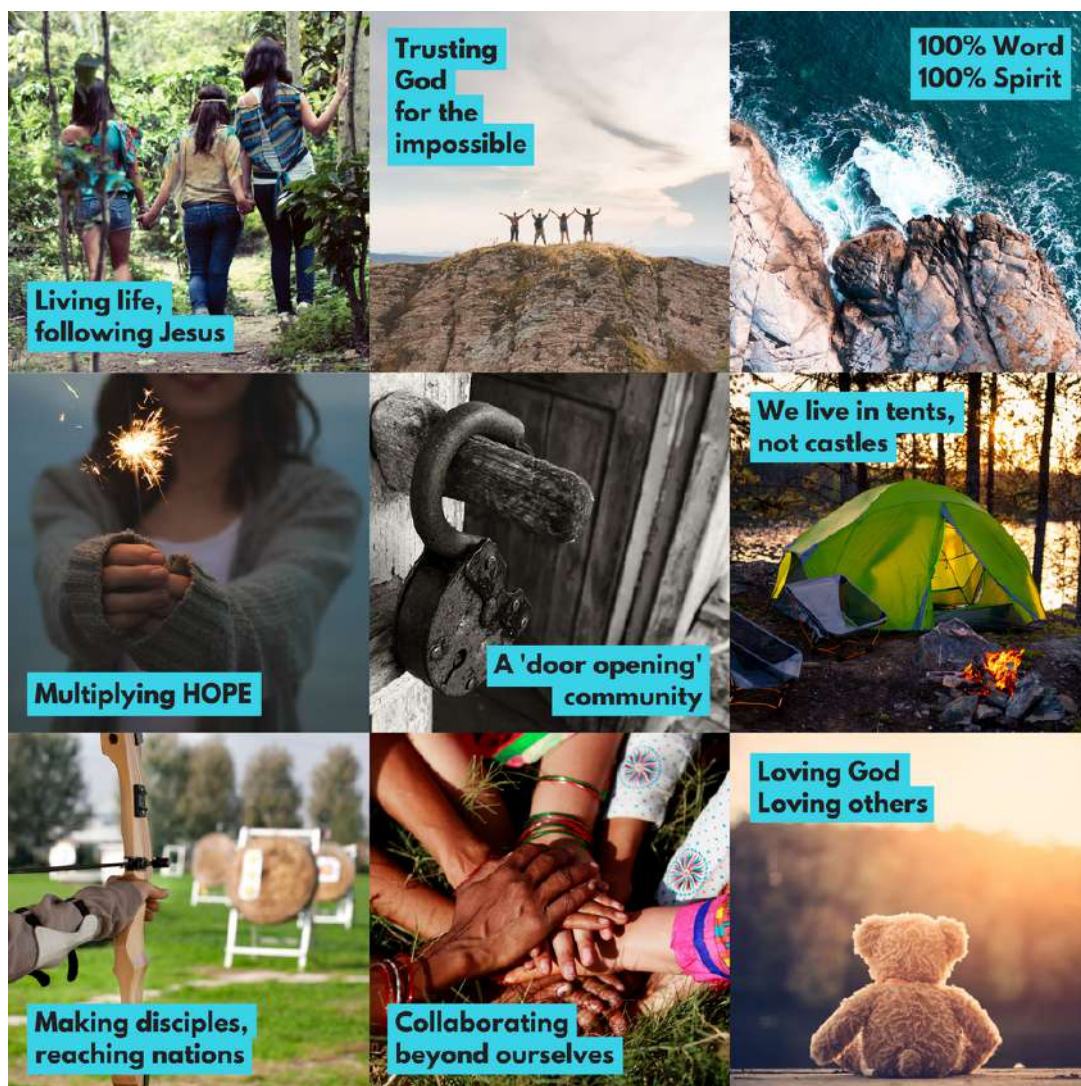


HOPE

Values

OUR 9 DISTINCTIVE KINGDOM VALUES



HOPE CHURCH
SITTINGBOURNE



HOPE CHURCH
SITTINGBOURNE

HOPE VALUES

LIVING LIFE, FOLLOWING JESUS | p. 2.

TRUSTING GOD FOR THE IMPOSSIBLE | p. 4.

100% WORD, 100% SPIRIT | p. 6.

MULTIPLYING HOPE | p. 8.

A 'DOOR OPENING' COMMUNITY | p. 10.

WE LIVE IN TENTS, NOT CASTLES | p. 12.

MAKING DISCIPLES, REACHING NATIONS | p. 14.

COLLABORATING BEYOND OURSELVES | p. 16.

LOVING GOD, LOVING OTHERS | p. 18.

CONTACT US

info@hopesittingbourne.org

07918 788982

VALUES FIRST...



The values of Hope Church Sittingbourne are those distinctive things which make us who we are – Think of them as being part of our DNA.

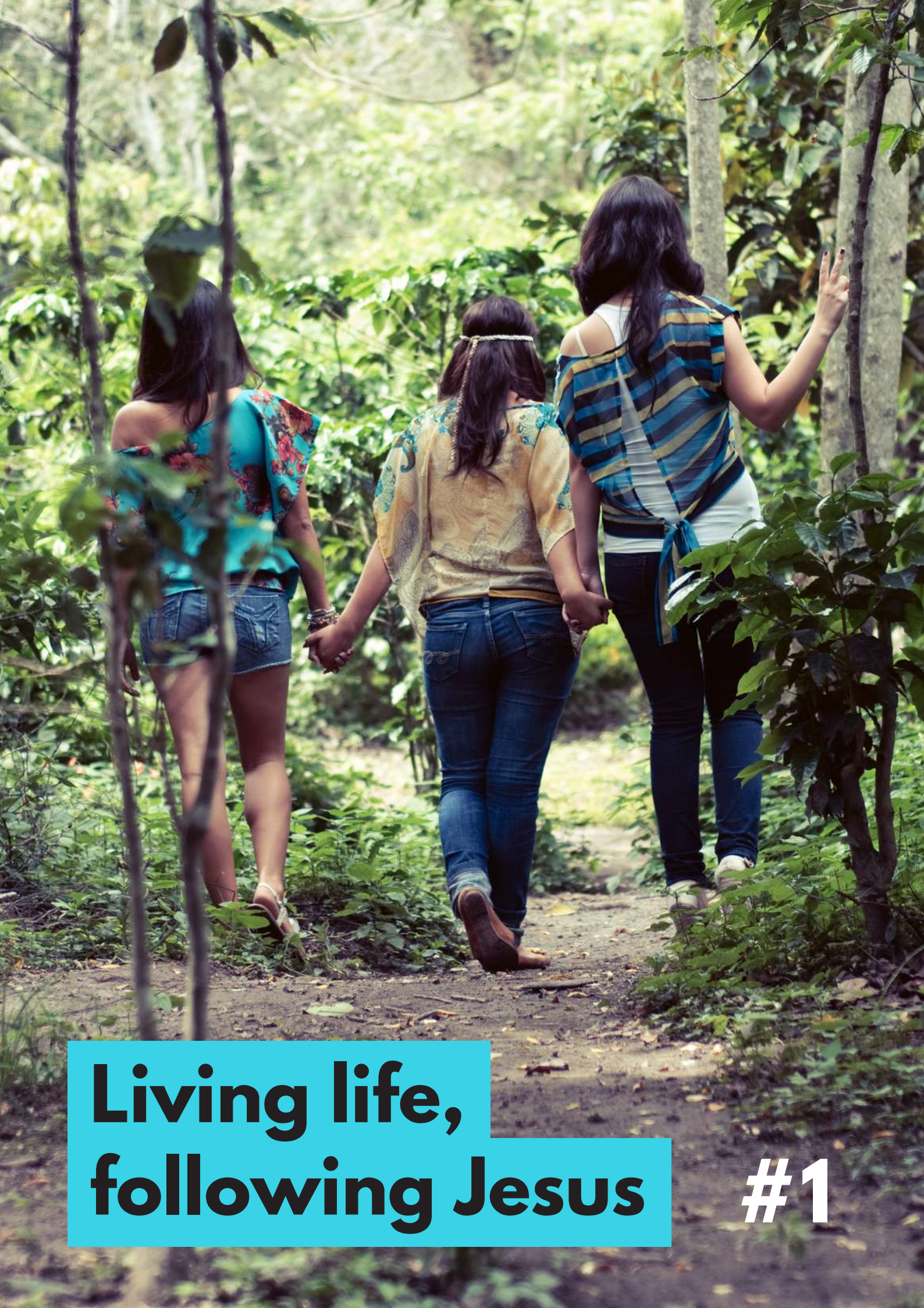
These are philosophical practices, each one undergirded by firm Biblical foundations. They are all important to us and define the way we live our lives, not just individually but collectively and in every conceivable context.

I'm firmly convinced that it is these values (rather than a vision statement) which will yield the greatest missional fruit. If together, we are able to cultivate a missional Kingdom culture, through engendering simple adaptive values, values which not only endure but thrive in every context, that's the path towards creating a reproducible and viral organic movement.

Gordon & Natalie

GORDON & NATALIE WATSON
HOPE CHURCH SITTINGBOURNE





**Living life,
following Jesus**

#1



We believe that life is a gift which is to be lived and enjoyed.

Life is a journey with many ups and downs. This journey is to be undertaken with others and Jesus is right there with us every step of the way.

Our daily lives are lived before an audience of One, Jesus.

God has created man and woman to complement one another – There are distinctives between the two sexes. Men are fathers, women are mothers. We believe that the Church is to be governed by male elders who meet the qualifications outlined in 1 Timothy 3:1-7 & Titus 1:5-9.

The Bible informs us that men and women lead together, being equal, both in value and dignity.

The Gospel of the Kingdom affects every aspect of daily life, not just Sundays (*ie. family, work, politics, ethics, morality, finances, education, social life, media, arts, sport, everything!*)

**JESUS DIED SO WE
MIGHT EXPERIENCE
LIFE TO THE FULL.
WE ARE GIVEN NEW
LIFE TO THRIVE,
NOT JUST SURVIVE!**

Trusting God for the impossible



#2



BELIEVING IN THE UNSEEN

**THERE WAS ONCE A DAY
WHEN HOPE CHURCH
SITTINGBOURNE WAS
NOTHING MORE THAN A
FAITH-FILLED DREAM...**

We are a Supernatural people who hope and trust in what we can't yet see.

We believe that the Kingdom of God is already advancing on the earth, but isn't yet fully realised/inaugurated (*the now & not-yet*).

When presented with challenges or setbacks our first thought is to give them to God *#prayerfirst*

We believe in the power of prayer and fasting - We are intentional with prayer preceding and undergirding all that we give ourselves to.

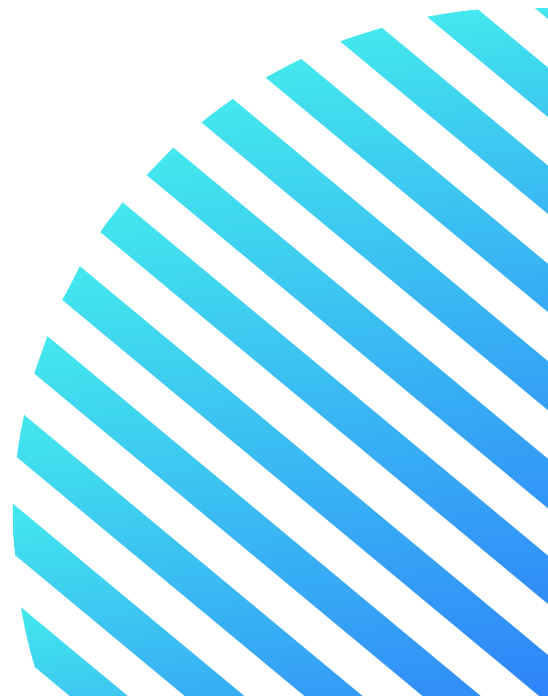
We believe that God heals today. Signs and wonders demonstrate the power of the Gospel and are not a means or end in themselves - The greatest miracle is salvation!

We believe that God is honoured through suffering – Sadly not everyone experiences healing in this life, pain and suffering exist. We disciple people to have a healthy biblical theology of suffering as expressed in Scripture.

Our experience does not define our expectation - We persevere, even with little faith or no observable changes, transformation or breakthrough.

We believe in the power of sacraments. God has given us communion, baptism, prayer, fasting and other spiritual practices that somehow change and transform us from the inside out. We embrace these ancient practices as part of a healthy, mature and holistic Christian lifestyle.

We have a vision defined budget, not a budget defined vision – Gods provision follows Gods vision. We will always have what we need provided for in season. Our personal & corporate finances should reflect this faith-gap.



An aerial photograph of a rugged coastline. The ocean is a deep, vibrant blue-green, with white, frothy waves crashing against a series of large, light-colored, and heavily textured rock formations. The rocks are jagged and layered, showing signs of weathering. The overall scene conveys a sense of raw, natural power and beauty.

**100% Word
100% Spirit**

#3

THE SPIRIT FILLED CHURCH



It is said that if you're all Word you dry up and if you're all Spirit you blow up. To be 50% Word, 50% Spirit would be contrary to New Testament teaching, we would be luke-warm - We are 100% Word and 100% Spirit.

We believe the Word of God is relevant for every generation, nation and tribe.

We believe the Word of God is an unchangeable truth, it represents the unchanging Kingdom rule and reign of God in all eternity.

We believe that the Word of God is living and active and speaks to us today.

We believe that the Holy Spirit is alive and active and the inheritance of every Christian today.

We believe that God liberally gives gifts to His children to encourage others & build His church (*eg. tongues, healing, prophecy, administration, works, mercy, etc.*)

We believe that the Holy Spirit of God can be grieved through the way we live our lives, so we believe in holiness and intentionally trying to live lives that honour Jesus.

We believe in lavish grace - A gift we receive that we don't deserve. Grace is the cure for legalism, it helps us rest from striving, as we embrace the perfect finished work of Jesus undertaken on our behalf.

**THE WORD OF GOD IS
RELEVANT FOR
EVERY GENERATION,
NATION & TRIBE...**

We believe in mercy - We don't get what we do deserve (*judgement*). Because of the perfect work of Christ, we are forgiven and made one with God in reconciliation as adopted sons & daughters. We are no longer at war with God, we can experience true peace!



#4

Multiplying HOPE



OUR HOPE IS JESUS, THE LIVING HOPE

1 PETER 1:3

THE HOPE WE ARE MULTIPLYING IS
DISCIPLES WHO OBSERVABLY..

HONOUR JESUS

OBEY HIS WORD

PRAY BEYOND
THEMSELVES

EVERYONE A WITNESS

We are a church built around
the word HOPE.

Hope is more than a name of a
church - Hope is an attitude of
the soul.

We receive hope as we
encounter Jesus.

We believe in hope as we
outwork our daily lives.

We extend hope in a hopeless
world.

We look for opportunities to
considerately share our stories
of hope with others.

We believe everyone has their
own unique story of hope
which is yet to be discovered.

We express hope in all that we do
(eg. when we face opposition or
problems we lean into hope).

Even in complete darkness and
desolation, hope exists.

Resurrection life is all about hope
– We are a people living in the
hope of the Easter story.





#5

**A 'door opening'
community**

SETTING CAPTIVES FREE



God has entrusted us with keys to unlock doors (& chains) for the Gospel to advance through.

We are a people that live in freedom because our doors have been unlocked by Jesus.

We create intentional opportunities for others to flourish by opening doors with them.

We are a hospitable people who live with the relational doors of our lives wide open.

The doors to our homes are wide open; our tables always having room for one more to join us.

The doors to our church community are wide open to everyone, regardless of their back-story, religion, persuasion, beliefs and practice.



**WE ARE ALL
TROPHIES OF
GRACE & WE SEE
OTHERS THROUGH
THOSE SAME EYES.**

**We live in tents,
not castles**



#6

WE ARE ALL TRAVELLERS JOURNEYING THROUGH LIFE



We are a pilgrim people, always on the move, passing through this life. (*Hebrews 11:9*)

Our home is in heaven, we are not getting settled in this world.

Life is better lived singing songs around the campfire and telling stories.

We live in meaningful and authentic community separated by thin canvas rather than thick stone.

God has called us to keep moving forward and not to settle for settlements. (*Philippians 3:20*)

We are not geographically bound, God can (*and may*) call any of us anywhere at any time.

We live in an intimate relationship to our environment; connected, known and rooted.

We live off the land – We aim to live local, shop local, have fun locally and invest ourselves locally.

We are intentionally vulnerable, dependent and exposed - Living our lives publicly to be observed.

We live lives which observably express Gospel mobility (*not hoarding, travelling light, what's mine is yours*). (*Acts 2:42-47*)

Anything that hinders or prevents Gospel mobility probably needs reviewing. (*1 Peter 2:11*)

We all need one another on the journey of faith.. we're joined together in radical solidarity, not self-centred individualism.

Others we meet along the way both add to, and enrich, our story, even if only for a passing moment.

We honour the strangers passing through. We are a people who give themselves to those needing to find their bearings and make new friends in a strange new land.

**GOD CAN (& MAY)
CALL ANY OF US
ANYWHERE AT
ANY TIME.**

A close-up, vertical shot of a hand holding a wooden bow. The bow is light-colored wood with black mechanical components. The hand is wearing a brown sleeve. In the background, a large, round, wooden target is mounted on a white frame. The target has a white rectangular area with three yellow dots. The background is a grassy field with trees in the distance.

#7

**Making disciples,
reaching nations**

RAISING SENDING SUPPORTING



We believe we are an army - We have a biblical mandate for training and mobilising disciples to have a gritty and resilient wartime mentality.

We uphold the Great Commission - To go and make disciples. (Matthew 28:16-20)

We believe each person is known personally by God, and has their own unique next steps in following Jesus on His mission in their world.

We train and disciple people with these four things in mind:

1. Who someone is.
2. How they are gifted.
3. Where they are right now in their Christian faith.
4. Where God has called them to be; geographically, in vocation/service and in their character.

We then together discern one create *next steps* towards that person growing in personal faithfulness and obedience.

We believe that discipleship happens in community, and along the road of adventure with Jesus, not in classrooms!

We intentionally create opportunities for people to get out on the road following Jesus, encouraging one another to learn and grow in faithfulness and obedience.

We have our eyes firstly fixed on our Jerusalem, then towards our Judea, Samaria and the ends of the earth. (Acts 1:8)

We make extra effort to encourage and support friends in pioneering contexts both locally and in the nations - We can achieve far more together than we can apart.





**Collaborating
beyond ourselves**

#8



PAR TNE RSH IP.

We believe that the picture of Nehemiah building the wall is part of our redemptive calling. (*Nehemiah 3*)

We aspire to be a cohesive and central collaborative pillar to the Kingdom work of God in our generation, both in Sittingbourne and to the regions and nations beyond.

We believe that where brothers dwell together in unity there the Lord commands a blessing. (*Psalms 133*)

We believe that we are to call others in co-labouring towards Kingdom advance across denominations and streams and theological boundaries.

We also believe we are called to partner with those who may not be of faith but are for working towards the good of our local communities and wider regions/nations (*ie. government, businesses, charities, agencies and organisations*).

WE ARE HERE FOR GOOD..

- 1. HERE FOR THE GOOD OF THE TOWN**
- 2. WE ARE PUTTING DOWN LONG-TERM ROOTS**

Loving God **Loving others**



#9



Jesus has called us to love the one in front of us and to not get caught up in numbers.

We proactively ensure we are a Church for a broken world through loving the least, the last and the lost.

When faced with difficult decisions we prioritise the poor.

When we read the New Testament, we see Jesus at work on the margins and empowering the disempowered. Jesus came for the sick, not the well. This is the way in which Jesus sacrificially loves us, when we were at our most unlovely - We are to do likewise.

**HOPE CHURCH SITTINGBOURNE
EXISTS TO MULTIPLY THE
HOPE OF JESUS
IN THE HEARTS OF
EVERYONE, EVERYWHERE, EVERYDAY**

FOLLOW OUR FACEBOOK PAGE

Our Hope Church Sittingbourne Facebook page is an essential like if you want to be able to engage with our Livestream services.

We also share news & information about wider events via our Facebook page.

FACEBOOK



INSTA

FOLLOW US ON INSTAGRAM

We use Instagram to share BIG news, inspirational stories and engaging visual content.

If you find pictures easier to process than words, then Insta is a great way to keep up-to speed with all things Hope Church Sittingbourne.

@hopesittingbourne

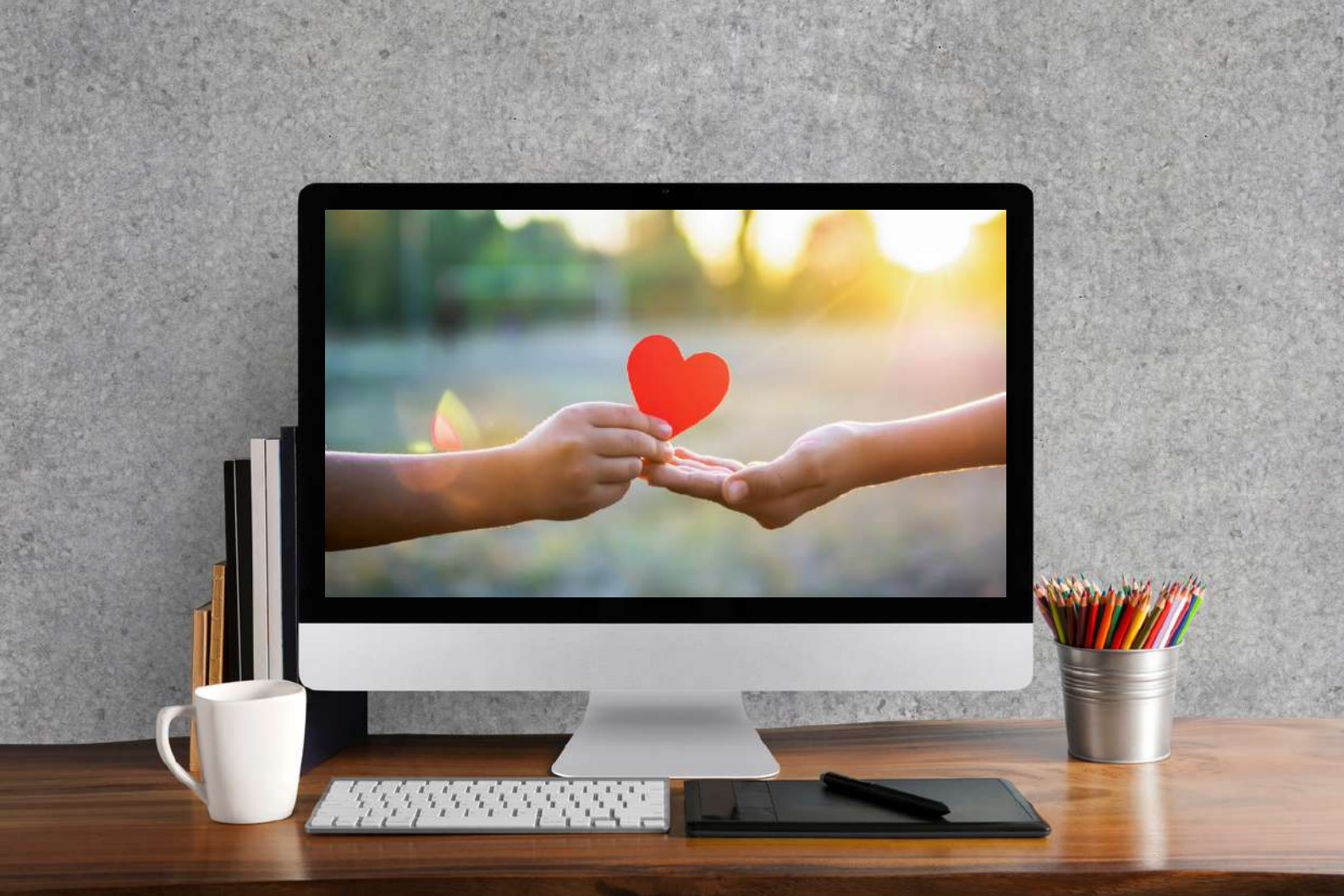
FOR THE EVERYDAY CONVERSATIONS

HOPE Hub is our very own app where daily conversations happen. You can request prayer, be encouraged by a worship song, some Bible verses, catch up on recent podcasts plus hearing what's going on in other people's lives too!

Ask Gordon or Natalie if you would like to be added.

HOPE HUB





GENEROSITY IS POWERFUL...

GIVING | JOYFUL, GENEROUS, REGULAR & PROPORTIONATE

It changes the life of the giver and the world around them.

At Hope Church Sittingbourne we are passionate about living generously as a whole community. We have realised that our mission to impact our town, the surrounding region and the world beyond can not be achieved without it.

We value stewardship... We believe that everything we have belongs to God and we are only looking after (or are stewards of) what God has entrusted us. It is with this in mind that we encourage people to give joyfully, generously and regularly in proportion to their income.

It takes resources to fulfil all that God has called us to do, so let's each ask God what we could do to play our unique part in practically resourcing our collective mission as Hope Church Sittingbourne.

Many give directly from their bank account by regular standing order. Giving in this way means that those with responsibility for stewarding our finances have the benefit of knowing that an assured amount will be available each month.

Tithing (giving 10% of our income) is a commitment that many of us have decided to undertake in faith.

If you are a UK tax payer, please do also complete the online Gift Aid form via our website. Gift Aid is a government initiative which means that for every £1 you give, we can claim an extra 25p from the HMRC at no extra cost to you - This makes your giving go that much further!

For more info visit...

www.hopesittingbourne.org/give

Legal & governance...



Hope Church Sittingbourne is a registered UK charity (#1186867) and operates within the legal framework of the Charity Commission and the HMRC.

All finances and assets are stewarded by our trustees and spiritual leadership. Our financial accounts are audited externally and available as a public document via the Charity Commission website.



HOPE CHURCH
SITTINGBOURNE